



DATA INTEGRATION **INTO GIS** SERVICE OVERVIEW

INTUS
smartcities

INTUS Smartcities is setting out to change the way cities operate on a global scale. Through the use of proprietary resources, INTUS Smartcities solves infrastructure challenges and problems related to safety, efficiency, resource sustainability, environmental damage, and data.

GEOSPATIAL FUNCTIONALITY

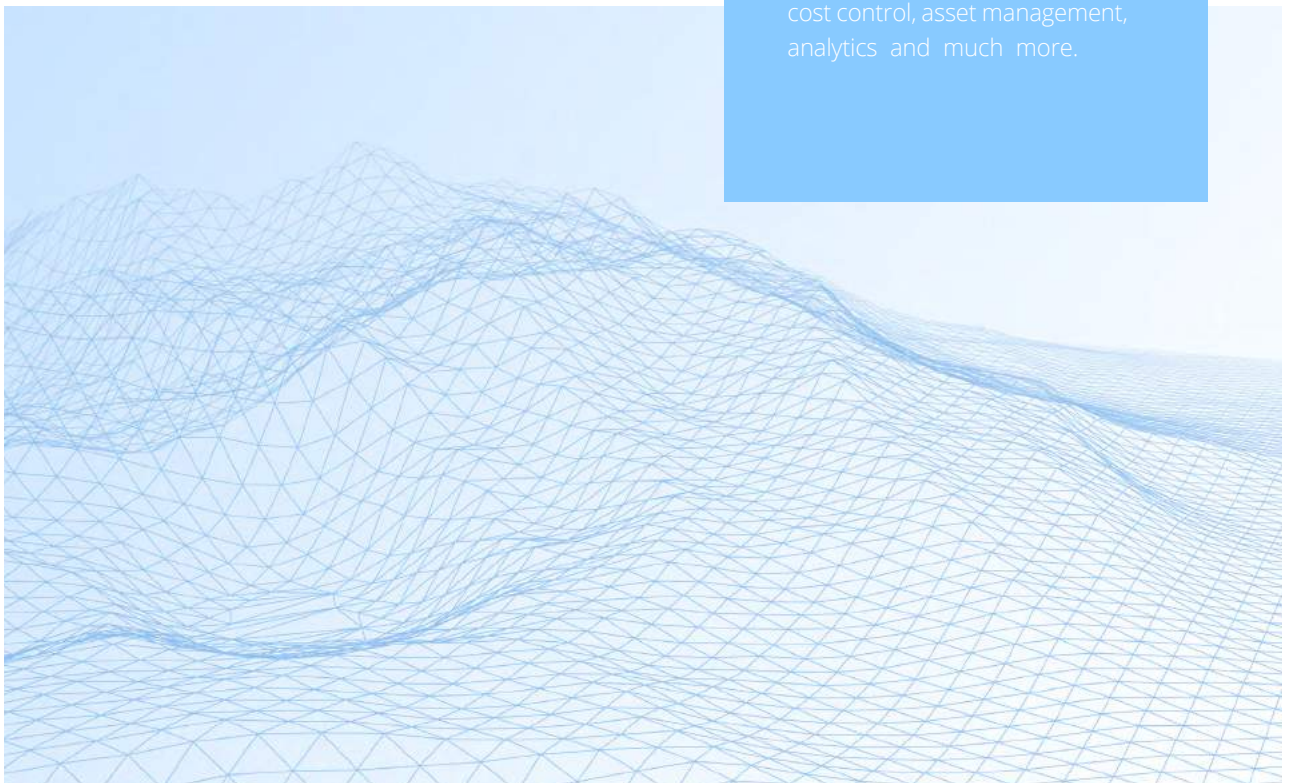
GIS DATA INTEGRATION

Municipalities and organizations have copious amounts of geospatial data that is unorganized. Unorganized data compromises the integrity of project planning and maintenance, stifling efficiency. There is no universal dashboard nor is there any uniformity with the data. This leaves city planners frustrated and confused on how to proceed. Through GIS integration, data can take on a new life and actually prove useful when planning for the future.

Geospatial data integration takes GIS to a new level of functionality. When combining GIS with geospatial data, a new world of possibilities is created when it comes to planning, management and safety of projects.

What is Data Integration?

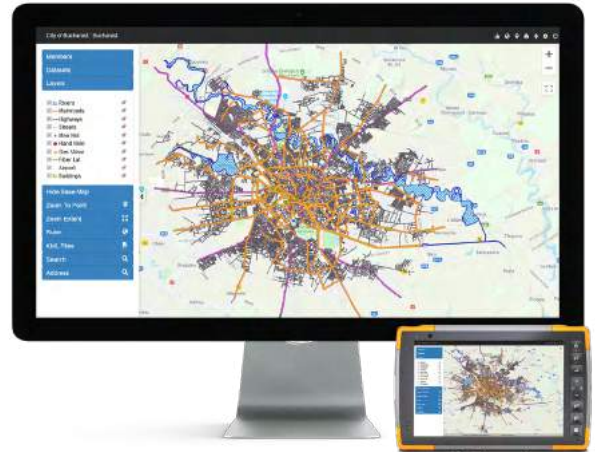
Data integration into GIS involves combining data residing in different sources and providing users with a unified view of data sets. Data can refer to maps, notes, digital maps, hand-drawings and much more. All of these file types can be converted and integrated into Web-GIS. Once this data is integrated, it takes on a new life, assisting in cost control, asset management, analytics and much more.



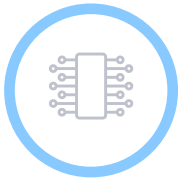
GEOSPATIAL SOLUTION SMARTPOLIS SOLUTIONS

Smartpolis can integrate a variety of data sources, from legacy systems to hand-drawn maps. Smartpolis takes this further by making complex data understandable and accessible in a visually stunning way. With the ability for Web-GIS to manage, correlate, predict, model, and share information – while being cross compatible – makes it an essential analytical and decision making tool for a variety of industries.

When combining GIS with geospatial data, a new world of possibilities is created when it comes to planning, management and safety of projects. Integration is also extremely beneficial for citizens, bettering the way in which they interact with municipalities and access services. Geospatial data turns GIS into a 360° tool that is vital for every municipality and organization.



KEY FEATURES



INTEGRATE INFORMATION & DATA

Informed decisions rely on integrated data from diverse sources. Through Smartpolis' Web-GIS, data can be compiled into a common operational picture for comparative analysis, visual presentation and reporting.



IMPROVE DATA ACCURACY ON DEVICES

By integrating mobile systems and devices (sensors, tablets, etc.) geospatial data and descriptive information can be accurately entered and viewed



PROVIDE ACCESS TO DATA

Smartpolis' technologies provides a way to move data from the project level so that it can be used by the entire organization. Data can be easily accessed using through cloud computing.



FUNCTIONAL INTEGRATION

WEB-GIS CAPABILITIES

Web-GIS is adaptive, scalable, and revolutionary in the way it creates industry solutions. The data used is vital when it comes to maintaining infrastructure and ensuring all assets are in working order. With data integration, Web-GIS becomes a universal tool to run all types of city and municipal sectors.

1

Infrastructure Network Management

Infrastructure networks are becoming increasingly interconnected and complex. This reality is true for both large and small municipalities with the demand for services always increasing. By integrating geospatial data into Web-GIS, Smartpolis is able to help create smarter infrastructure network management. With Web-GIS, all-important information is integrated into one system that can also work with other 3rd party software suites. With Web-GIS, network data is brought to life and illuminated, highlighting every asset and juncture. Web-GIS can become a command center, managing the most important aspect of infrastructure networks such as location, efficiency and health.

2

Integrity & Proper Functionality

It is vital that all assets are functional and operate with no issues. In other words, asset integrity is vital when providing services, planning projects and when carrying out maintenance. However, asset integrity is only achieved with accurate geospatial data and Web-GIS. With geospatial data integration into GIS, users will always know what is happening and where it is happening. With 365-a-year monitoring, all asset operational integrity is astronomically increased. Whatever users need, Web-GIS presents all geospatial data in a clean and uniform suite to ensure its operational integrity.

3

Maintenance

With Web-GIS and geospatial data integration, maintenance is streamlined and made more efficient. Thanks to its network management capabilities, Web-GIS is able to constantly monitor the health and operability of all sorts of infrastructure assets. When GIS has up-to-date geospatial data it has the ability to monitor each aspect of an asset. If there is an issue, Web-GIS will not only highlight and alert users, but can also create immediate work orders, dispatch responders, all while specifying damage and the recommended course of action. This 360° ability to monitor infrastructure health and simultaneously carry out maintenance is not only efficient but also vital to the longevity of important assets.

4

Safety & Security

Infrastructure assets must always be secure, safe, and accessible to emergency responders during times of crisis. With Web-GIS and geospatial data integration, areas of asset damage are highlighted in real-time, while crews are dispatched to deal with the situation. Web-GIS also helps with preventative measures to make sure that any chance of large-scale damage is reduced. Web-GIS also has the ability to incorporate many add-on features that not only help emergency responders, but also change the way in which all emergency response is carried out (Augmented Reality & ER).

5

Municipal Asset Management

Municipalities are constantly faced with the need to manage a large pool of aging assets. With limited resources and budget constraints, assets can often be difficult to manage. Smartpolis helps municipalities make informed decisions for multiple asset types to help manage and maximize current resources. This management is carried out by Smartpolis' proprietary Web-GIS. Web-GIS captures, integrates, and organizes data for infrastructure assets, providing real-time information necessary to make knowledgeable decisions on repairs, maintenance and future ventures.

6

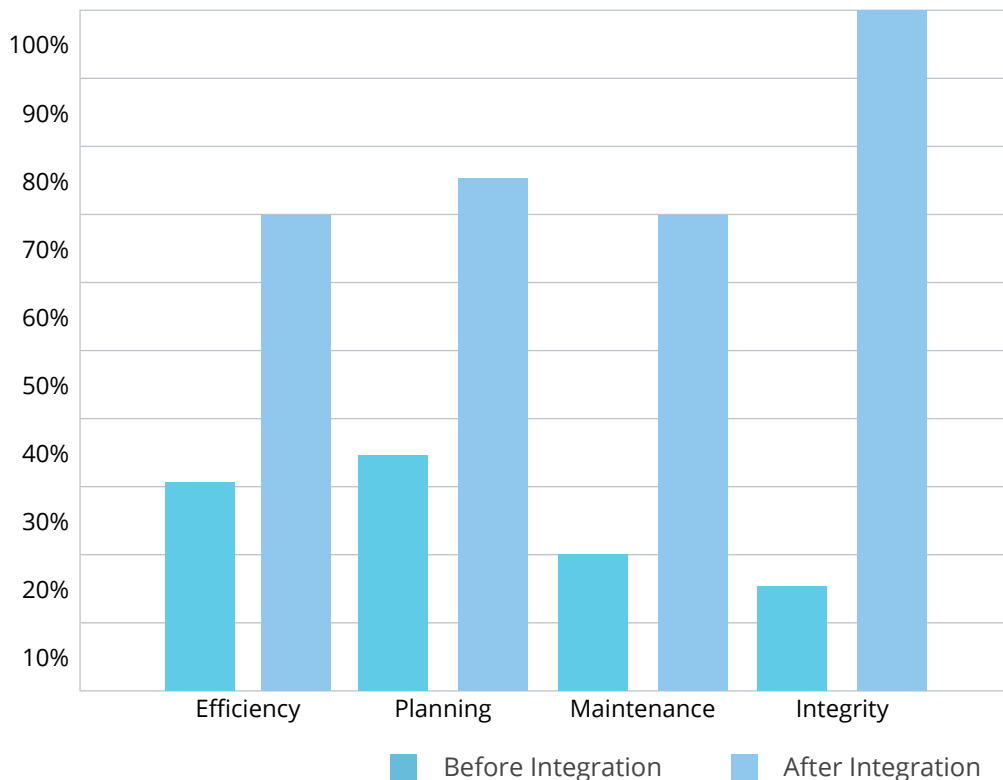
Citizen Services & Interaction

Web-GIS, when combined with up-to-date geospatial data, can drastically improve the way in which citizens access services and interact with municipalities. Web-GIS contains various amounts of metadata that can assist citizens with how they receive municipal services (transit, garbage pick-up, etc.). By providing citizens with more ways to interact with their city, municipalities have the ability to work with citizens to improve how services are delivered.

OPERATIONS

When data is properly integrated into a Web-GIS platform all forms of operational capacities drastically increase. Specially, there are increases to efficiency, planning, maintenance and integrity.

Operational % Before & After Integration





DATA INTEGRATION INTO GIS SERVICE OVERVIEW

INTUS Smartcities

INTUS Smartcities is setting out to change the way cities operate on a global scale. Through the use of proprietary resources, INTUS Smartcities solves infrastructure challenges and problems related to safety, efficiency, resource sustainability, environmental damage, and data.

Company Info



501 Silverside Rd #411,
Wilmington Delaware
19809, United States



+1 (302)-385-1060



info@intussmartcities.com