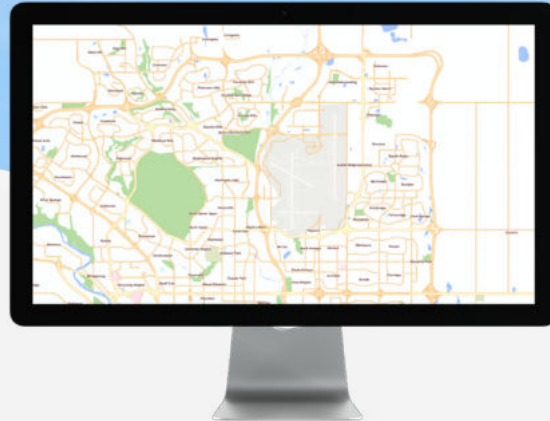


INTERACTIVE MAPS

Interactive web-based maps to help citizens engage with their city



ABOUT **INTERACTIVE MAPS**

Smartpolis Maps are a useful tool for presenting landmarks of importance to the citizens in a geospatial manner. The City can identify and select touristic areas that they want to promote or areas of interest for business opportunities. Additional information on this focused landmark can be provided using AR and visualizations along with visitations schedules, etc.

MAIN **FEATURES**



Points of Interest

All points of interest such as historical locations and beaches can be accessed on the map.



Business

Highlight key municipal buildings and locations for citizens and tourists.



Web-based

View interactive maps from any Smartpolis connected device.